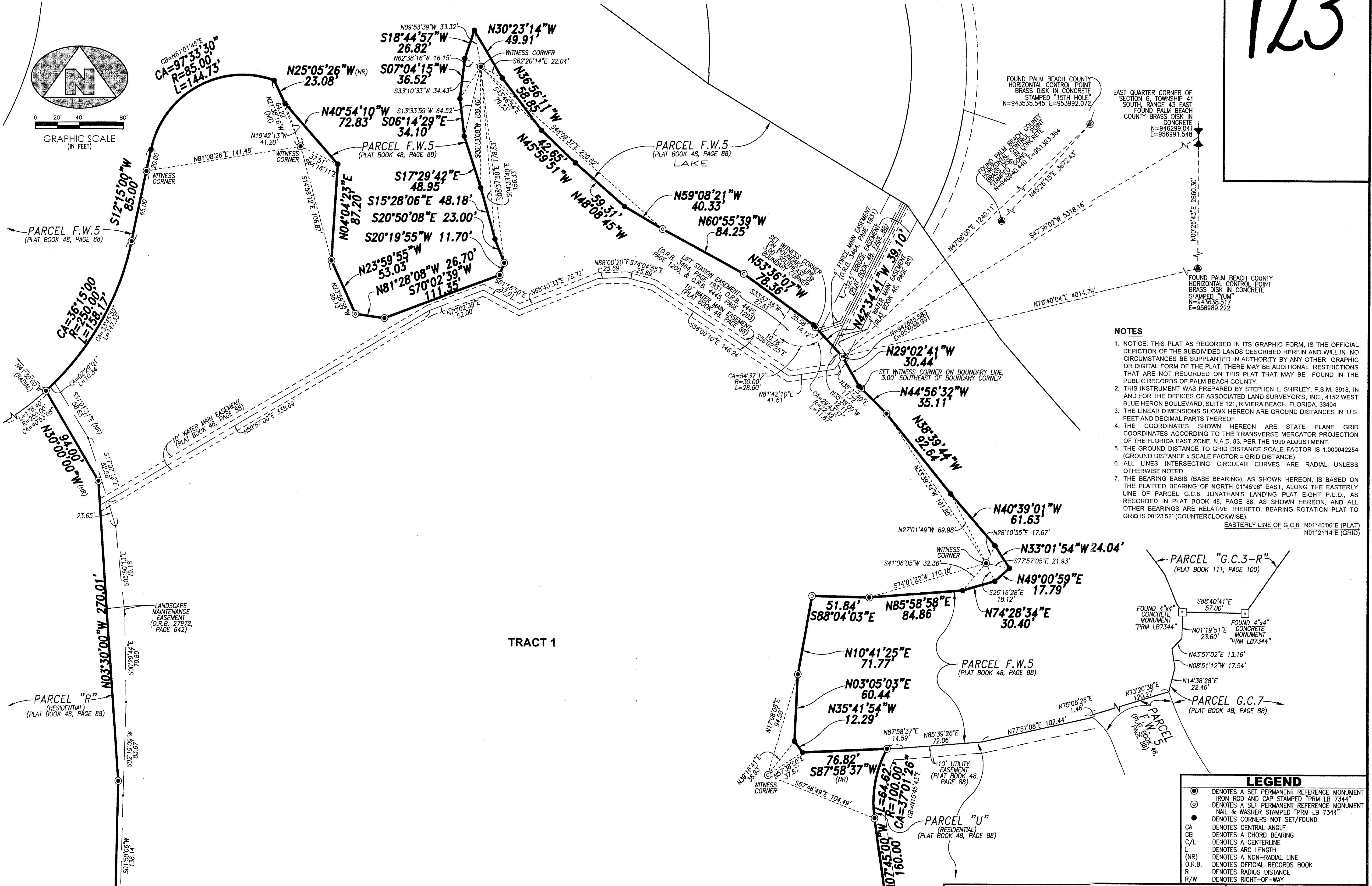


JONATHAN'S LANDING REPLAT OF PORTIONS OF PLAT EIGHT P.U.D.

BEING A REPLAT OF PARCELS FW6, JJ, AND G.C.8, ACCORDING TO THE PLAT THEREOF, AS RECORDED IN PLAT BOOK 48, PAGE 88, PUBLIC RECORDS, PALM BEACH COUNTY, FLORIDA, AND LYING IN SECTION 7, TOWNSHIP 41 SOUTH, RANGE 43 EAST, PALM BEACH COUNTY, FLORIDA

123



- NOTES**
1. NOTICE: THIS PLAT AS RECORDED IN ITS GRAPHIC FORM, IS THE OFFICIAL DEPICTION OF THE SUBDIVIDED LANDS DESCRIBED HEREIN AND WILL IN NO CIRCUMSTANCES BE SUPPLANTED IN AUTHORITY BY ANY OTHER GRAPHIC OR DIGITAL FORM OF THE PLAT. THERE MAY BE ADDITIONAL RESTRICTIONS THAT ARE NOT RECORDED ON THIS PLAT THAT MAY BE FOUND IN THE PUBLIC RECORDS OF PALM BEACH COUNTY.
 2. THIS INSTRUMENT WAS PREPARED BY STEPHEN L. SHIRLEY, P.S.M. 3918, IN AND FOR THE OFFICES OF ASSOCIATED LAND SURVEYORS, INC., 4152 WEST BLUE HERON BOULEVARD, SUITE 121, RIVIERA BEACH, FLORIDA, 33404
 3. THE LINEAR DIMENSIONS SHOWN HEREON ARE GROUND DISTANCES IN U.S. FEET AND DECIMAL PARTS THEREOF.
 4. THE COORDINATES SHOWN HEREON ARE STATE PLANE GRID COORDINATES ACCORDING TO THE TRANSVERSE MERCATOR PROJECTION OF THE FLORIDA EAST ZONE, N.A.D. 83, PER THE 1990 ADJUSTMENT.
 5. THE GROUND DISTANCE TO GRID DISTANCE SCALE FACTOR IS 1.000042254 (GROUND DISTANCE x SCALE FACTOR = GRID DISTANCE)
 6. ALL LINES INTERSECTING CIRCULAR CURVES ARE RADIAL UNLESS OTHERWISE NOTED
 7. THE BEARING BASIS (BASE BEARING), AS SHOWN HEREON, IS BASED ON THE PLATTED BEARING OF NORTH 01°45'06" EAST, ALONG THE EASTERLY LINE OF PARCEL G.C.8, JONATHAN'S LANDING PLAT EIGHT P.U.D., AS RECORDED IN PLAT BOOK 48, PAGE 88, AS SHOWN HEREON, AND ALL OTHER BEARINGS ARE RELATIVE THERETO. BEARING ROTATION PLAT TO GRID IS 00°23'52" (COUNTERCLOCKWISE).

- LEGEND**
- DENOTES A SET PERMANENT REFERENCE MONUMENT IRON ROD AND CAP STAMPED "PRM LB 7344"
 - ⊙ DENOTES A SET PERMANENT REFERENCE MONUMENT NAIL & WASHER STAMPED "PRM LB 7344"
 - DENOTES CORNERS NOT SET/FOUND
 - CA DENOTES CENTRAL ANGLE
 - CB DENOTES A CHORD BEARING
 - C/L DENOTES A CENTERLINE
 - L DENOTES ARC LENGTH
 - (NR) DENOTES A NON-RADIAL LINE
 - O.R.B. DENOTES OFFICIAL RECORDS BOOK
 - R DENOTES RADIUS DISTANCE
 - R/W DENOTES RIGHT-OF-WAY

MATCH LINE
SEE SHEET 3 OF 3

MATCH LINE
SEE SHEET 3 OF 3

ASSOCIATED LAND SURVEYORS, INC.
 4152 W. BLUE HERON BLVD. SUITE 121
 RIVIERA BEACH, FLORIDA 33404
 PHONE: (561) 848-102 FAX: (561) 844-9659
 LB NO. 7344 EMAIL: als@alssurvey.net

JONATHAN'S LANDING REPLAT OF PORTIONS OF PLAT EIGHT P.U.D.
 SCALE: 1" = 40'
 DWN: BLS
 WO.NO.: P311
 SHEET 2 OF 3